



# ALIGNMENT NASHVILLE

**Sydney Rogers**  
Executive Director



# Alignment Nashville



**The mission is to bring community organizations and resources into alignment so that their coordinated support of Nashville's youth has a positive impact on public school success, children's health, and the success of our community as a whole.**



# Alignment Nashville



**Improved Student Achievement**



**ALIGNMENT**  
NASHVILLE



# Alignment Nashville

“The problems facing our cities seem to defy solution. But the only certainty is that the increasingly complex challenges exceed the capabilities of any single sector – public, private, or non-profit – to solve them alone.”

-James E. Austin  
Drucker Leadership Series





# History

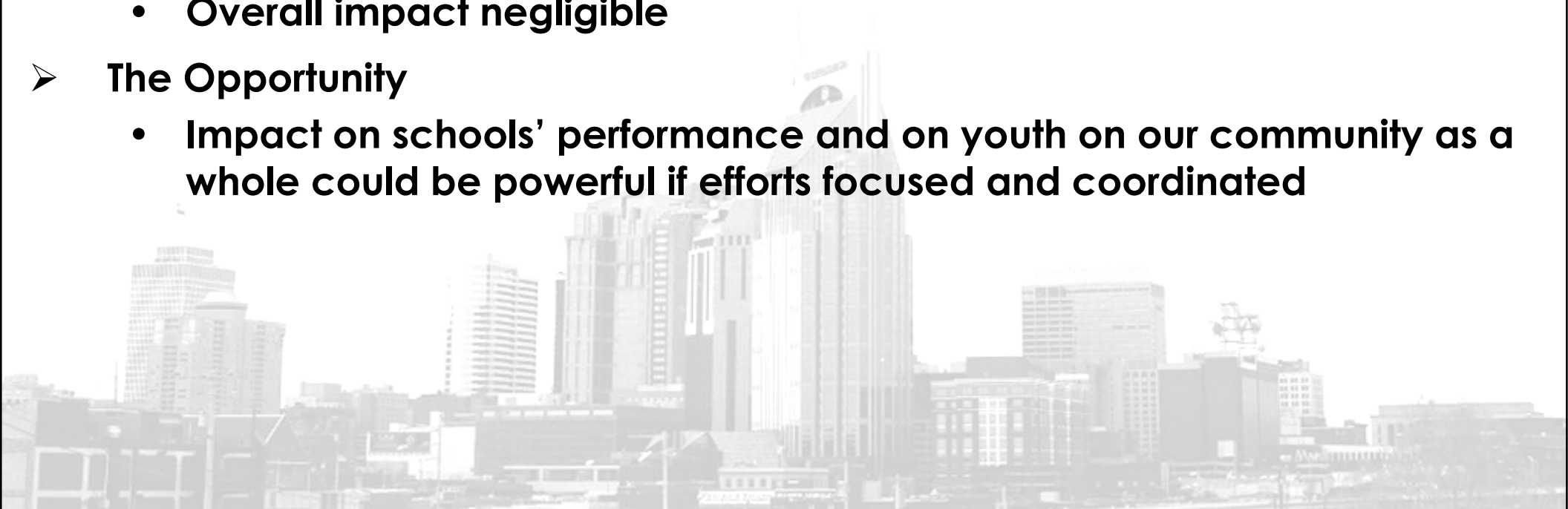
## The Situation (2002)

### ➤ The Problem

- In 2002, 175+ non-profits working with schools
- No overall coordination
- All accessing schools individually
- Large dollar, people and goodwill resources being consumed
- Caused administrative drain
- Overall impact negligible

### ➤ The Opportunity

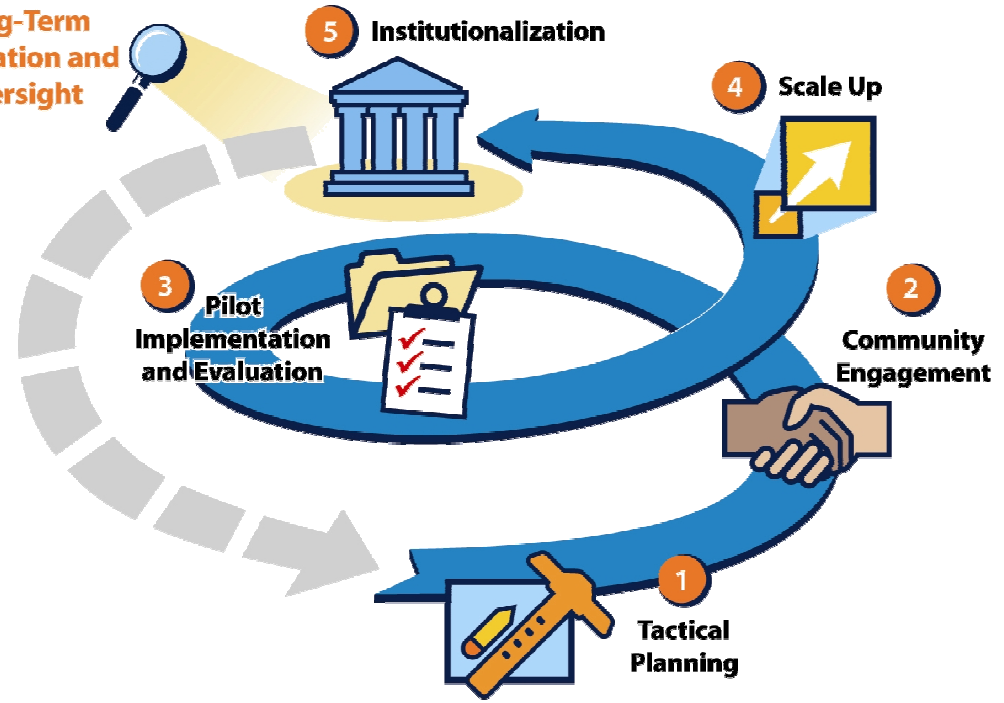
- Impact on schools' performance and on youth on our community as a whole could be powerful if efforts focused and coordinated



A B C D E

# About Alignment Nashville

Long-Term  
evaluation and  
oversight



# ALIGNMENT NASHVILLE



# About Alignment Nashville

## Committees

- Pre-K Committee
- Elementary School Committee
- Middle School Committee
- **High School Committee**
- 16-24 year olds, out of school out of work Committee
- Primary Care
- Healthy Starts
- Healthy Eating Active Living
- Adolescent Sexual Responsibility
- Behavioral Health
- Parent University
- Pathways to Postsecondary Education
- Refugee and Immigrant Support Services



# Outcomes

## Why the Alignment Process Works

**Greater returns on investment**—by working together toward common goals, resources are leveraged, duplication is avoided, and efficiency is greatly increased.

**Higher quality services**—utilizing expertise from multiple organizations guarantees a broader perspective and a wiser approach.

**Enhanced capacity**--very few organizations have the capacity to have community-wide impact. A collective effort enhances the impact of each of organization, while generating a much greater overall impact.

**Leverage of local funding**-AN programs have demonstrated they can attract large national funding if local funding has played a role in building the pilot programs.





# ALIGNMENT NASHVILLE

